

designingways

ISSUE 266

FLOORING

TAPS & BASINS

FABRICS



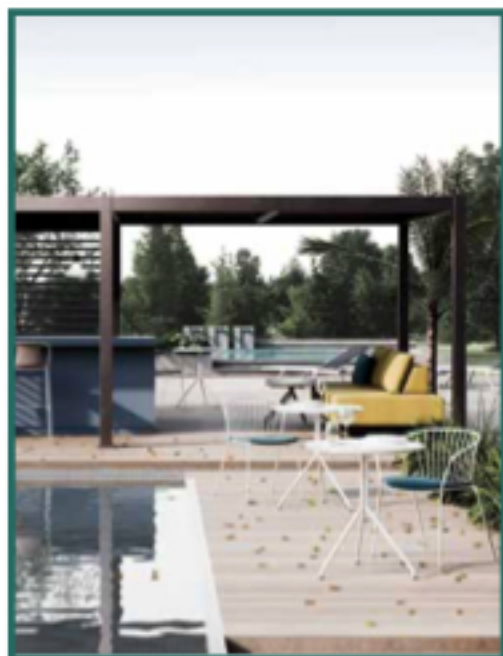
RSA 899.0C

designing ways

CONTENTS

Issue 266

- 6 TRADE WINDS**
Find hygge in the home with Plascon's winter palette - by Plascon
- 8 TRADE WINDS**
Coulisse wins award for smart and safe Eve MotionBlinds at IWCE 2023
- 10 TRADE WINDS**
Cape Town Decor & Design Week and Decorex Cape Town set to ignite the country's creative capital
- 12 TRADE WINDS**
PG Bison 1.618 Education Initiative - 2023 brief launched
- 14 CHAIRS OF NOTE**
An Italian icon returns to South Africa
- Table Tops Furniture



GABER represented by TABLE TOPS FURNITURE
KASIA bar stool, AMITHA chairs, EALA sofa with LOL tables
and DOGE sunloungers
www.gaber.it
www.tabletopsfurniture.co.za



20



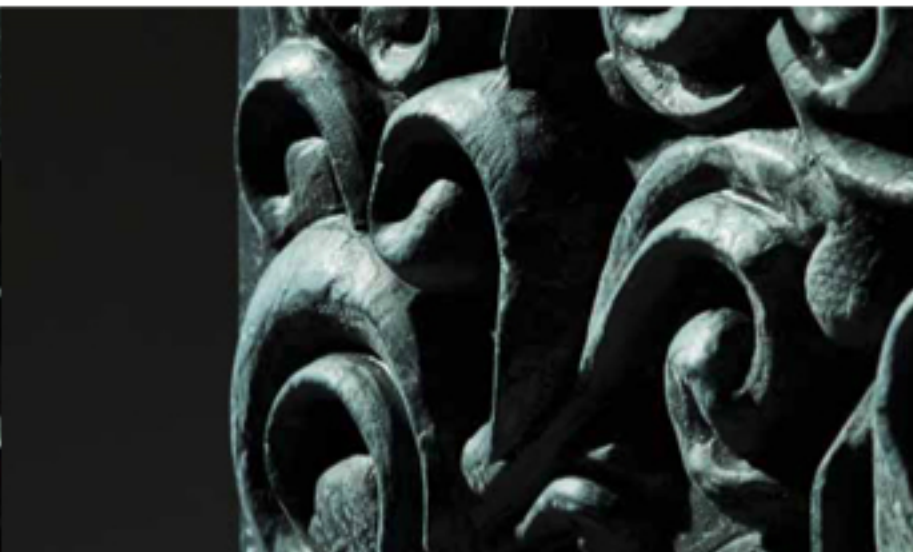
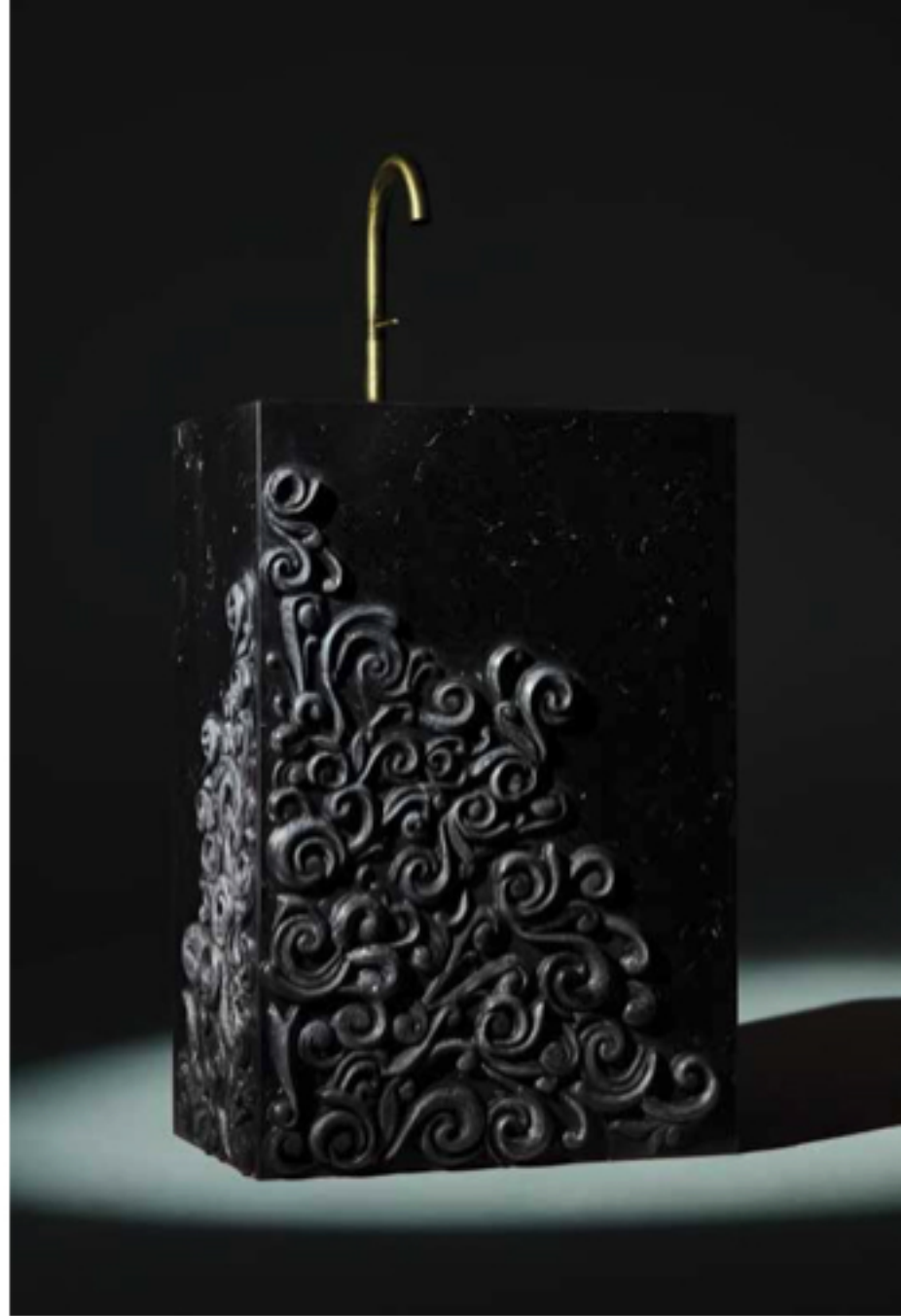
34

- 16 IID**
The African Institute of The Interior Design Professions
- 18 KSA**
The Kitchen Specialists Association
- 20 COMMERCIAL ARCHITECTURE**
Chimneys Are the New "Sexy" South Korea
- 26 FLOORING**
On The Floor - by Stienie Greyling
- 28 FLOORING**
Radici @ Salone del Mobile 2023
- 30 FLOORING**
The vision of Stefano Bombardieri and Carpet Edition moves "beyond"
- 32 TAPS AND BASINS**
Kitchen and bathroom basins - by Stienie Greyling
- 34 TAPS AND BASINS**
Dame - Design: Christophe Pillet
- 36 TAPS AND BASINS**
Kitchen and bathroom taps - by Stienie Greyling

Dame

Design: Christophe Pillet

Dame is the celebration of different aesthetics coming to life as works of art for the bathroom. A design that is born from the dichotomy between classic and contemporary, minimal and decorative. With this collection, the French designer Christophe Pillet solves the relationship between "old" and "new" and creates a



collection of marble and free-standing basins that are partially smooth and honed, and partially hand sculpted. The exterior has been treated like a precious sculpture, with circular counter basins and geometric free-standing basins. The interior of the product can be in contrast and customised with a choice of five different types of marble, in order to achieve the elegance of two-toned natural materials. The sets of stone that meet around the border have been skilfully cut to an extremely thin thickness. The Dame family is ideal for residential and high end hospitality projects.

www.kreoo.com